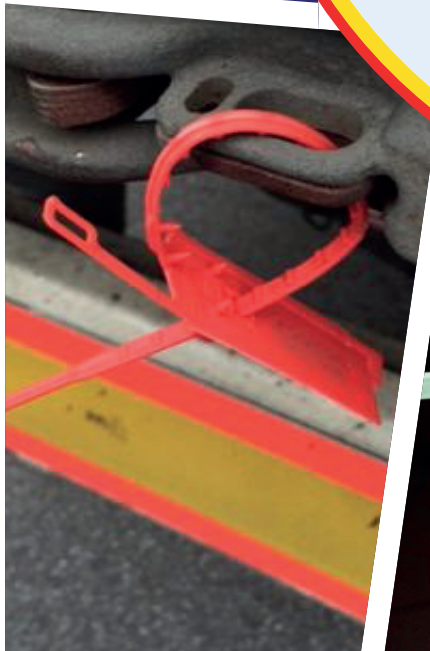





LOTO Safety Products DMCC

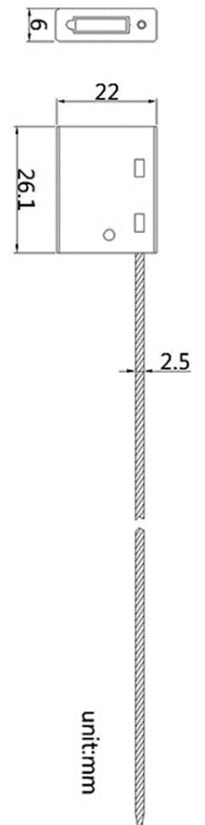




LOTO-LOK[®]

Car Seals


Model NO.	CS-RED-1M CS-GRN-1M CS-GRY-1M CS-BLU-1M CS-BLK-1M
Material	Body: Aluminum / Zinc. Cable: Braided aeronautics steel wire rope.
Size	2.5mm wire dia x 1000mm Length
Specifications	Car Seals, Aluminum / Zinc Body, Galvanized Aircraft wire cable 1000mm Length. Self Locking with Unique Serial No. printed on each piece.
Printing	LOTO-LOK [®] . Company names, logos and numbers can be customized based on minimum quantity orders. Please call or mail for further details.
Color	Red / Green / Blue / Black / Grey 

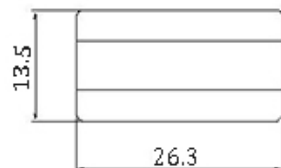
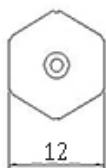
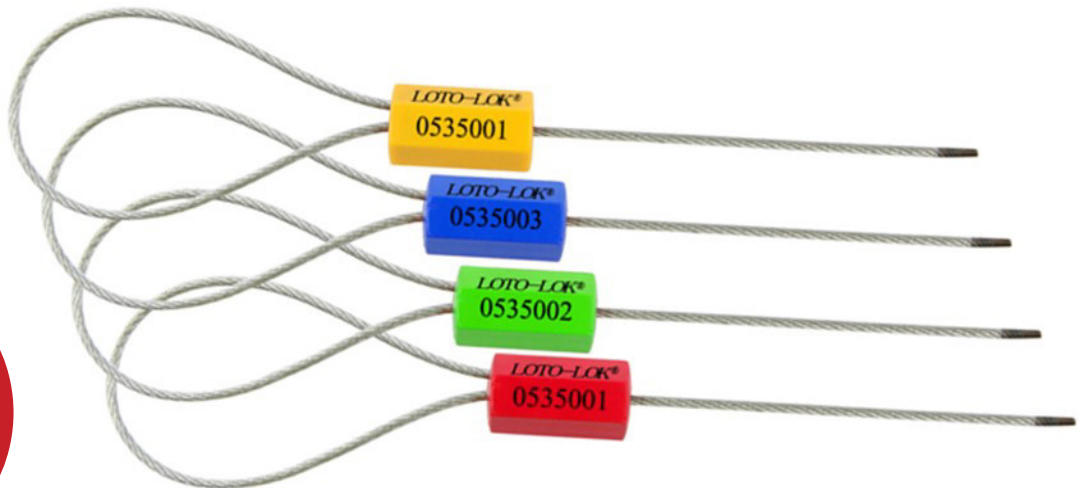


unit:mm



LOTO-LOK[®]

Model NO.	MS-K2-YL300 (Yellow) MS-K2-RD300 (Red) MS-K2-GN300 (Green) MS-K2-RB300 (Royal Blue)
Material	Zinc extrusion wrapped with ABS
Size	Cable diameter: 1.8mm, cable length: 300mm
Specifications	Hexagon lock head with dimensions 14mm X 27mm Zinc extrusion wrapped with ABS Braided aircraft cable construction Petroleum & Sunlight resistant Pull tight locking mechanism, easy to place Average tensile strength: more than 250 kgf Removable by bolt/cable cutters
Printing	LOTO-LOK [®] brand and unique numbers on each seal. Client logo and serial numbers can be customized subject to minimum quantity.
Color	Yellow / Red / Green / Royal Blue  Other colors available subject to minimum quantity on forward delivery basis.




Ø1.8

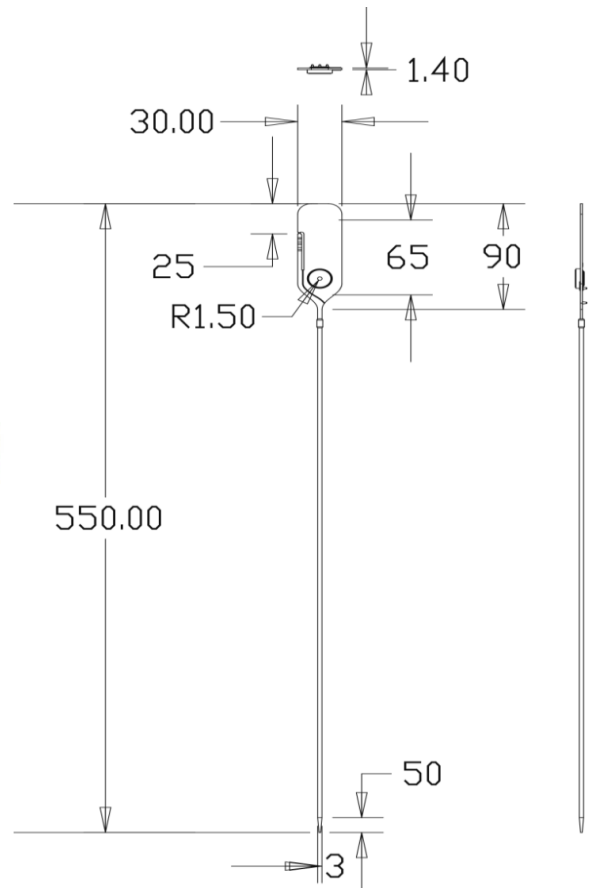
unit:mm



LOTO-LOK®


Security Plastic Seal

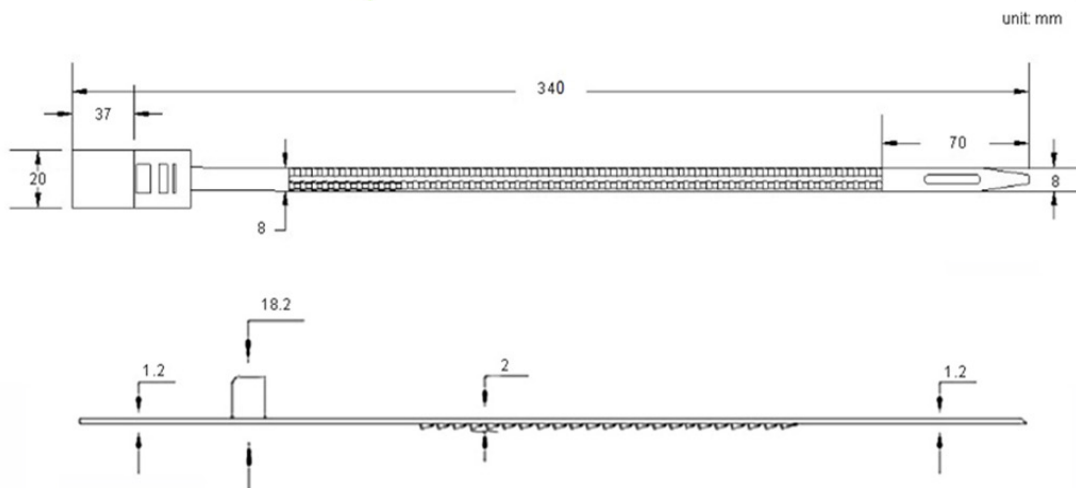
Model NO.	PS-R5-WH550 (White) PS-R5-YL550 (Yellow) PS-R5-RD550 (Red)
Material	PP or PE; Stainless steel piece inside
Size	Total length: 550 mm; Flag: 90mm X 30mm; Tail: 460mm X 3mm;
Specifications	Pull tight locking construction Approx tensile strength: 30kgf Working temperature: -10 °C - 70°C
Printing	LOTO-LOK® brand and unique numbers on each seal. Client logo and serial numbers can be customized subject to minimum quantity.
Color	White / Yellow / Red  Other colors available subject to minimum quantity on forward delivery basis.






LOTO-LOK®

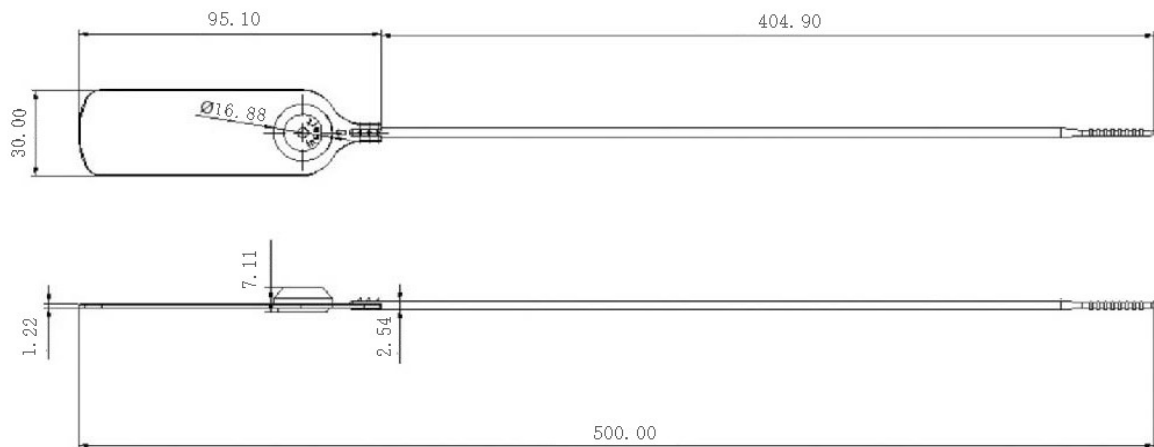
Model NO.	PS-R2-WH340 (White) PS-R2-YL340 (Yellow) PS-R2-RD340 (Red) PS-R2-RB340 (Royal Blue) PS-R2-GN340 (Green)
Material	PP; All plastic, free of metal
Size	Total length: 340 mm
Specifications	Pull tight locking construction More than 30 locking points Average locking strength is 30kgf
Printing	LOTO-LOK® brand and unique numbers on each seal. Client logo and serial numbers can be customized subject to minimum quantity.
Color	White / Yellow / Red / Green / Royal Blue  Other colors available subject to minimum quantity on forward delivery basis.






LOTO-LOK®

Model NO.	PS-RTPS-WH500 (White) PS-RTPS-YL500 (Yellow) PS-RTPS-RD500 (Red) PS-RTPS-GN500 (Green)
Material	PP (Polypropylene)
Size	Total length: 500mm
Specifications	Pull tight locking mechanism with metal clip inside Approx tensile strength: 25kgf
Printing	LOTO-LOK® brand and unique numbers on each seal. Client logo and serial numbers can be customized subject to minimum quantity.
Color	White / Yellow / Red / Green  Other colors available subject to minimum quantity on forward delivery basis.



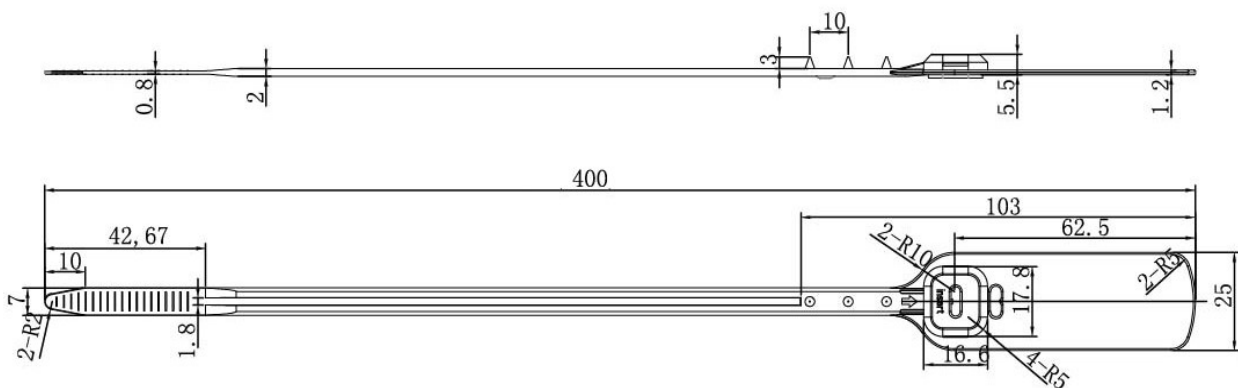


LOTO-LOK®

Model NO.	PS-ERPS-WH400 (White) PS-ERPS-YL400 (Yellow) PS-ERPS-RD400 (Red) PS-ERPS-GN400 (Green)
Material	PP (Polypropylene)
Size	Total length: 400 mm
Specifications	Pull tight locking mechanism with metal clip inside Approx tensile strength: 30kgf
Printing	LOTO-LOK® brand and unique numbers on each seal. Client logo and serial numbers can be customized subject to minimum quantity.
Color	White / Yellow / Red / Green  Other colors available subject to minimum quantity on forward delivery basis.




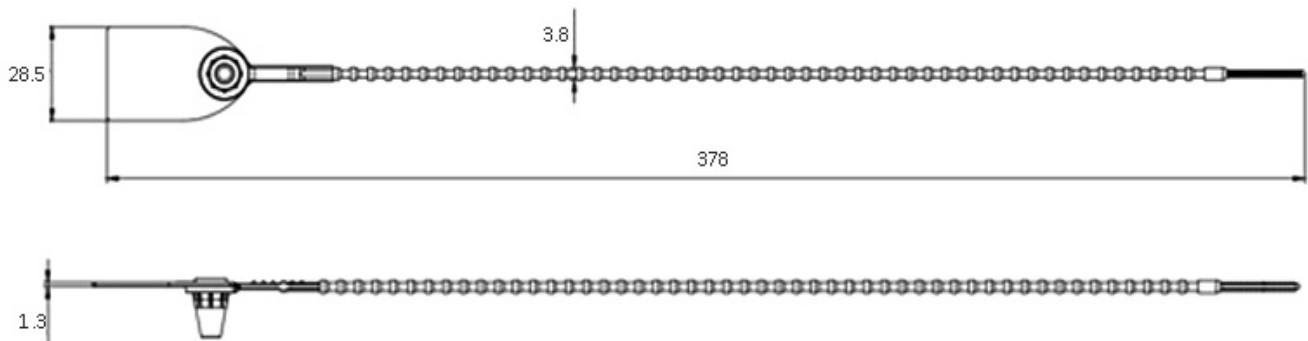
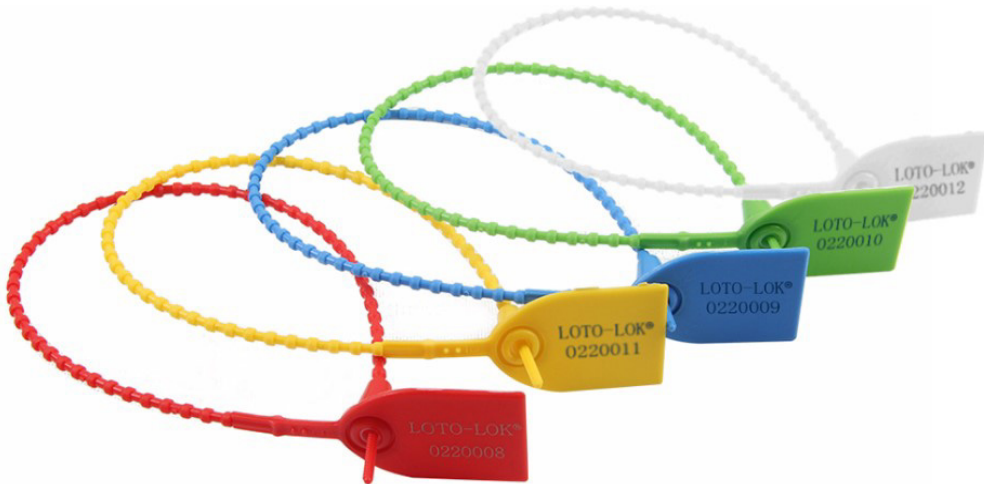
unit: mm






LOTO-LOK®

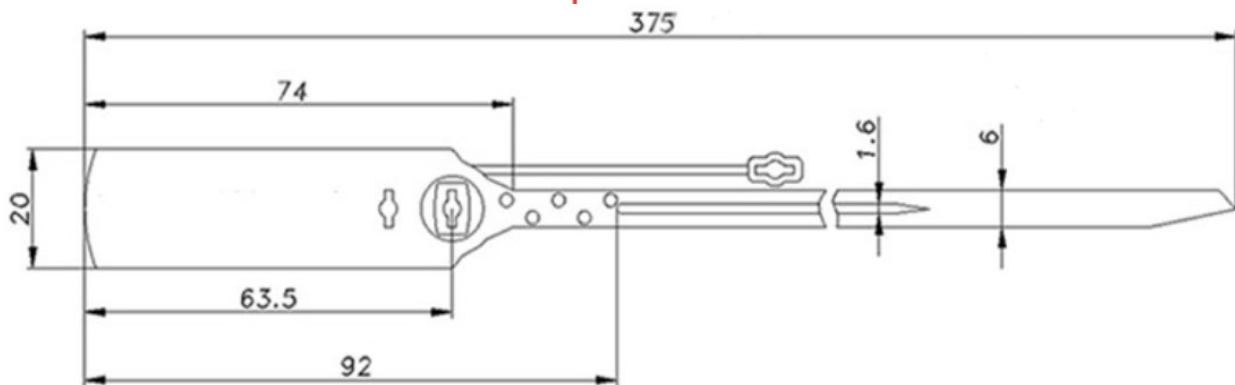
Model NO.	PS-Q390-WH (White) PS-Q390-YL (Yellow) PS-Q390-RD (Red) PS-Q390-GN (Green) PS-Q390-RB (Royal Blue)
Material	PP; All plastic, free of metal
Size	Total length: 378mm
Specifications	Pull tight locking mechanism More than 30 locking point for customers' choice Average tensile strength: 15kgf
Printing	LOTO-LOK® brand and unique numbers on each seal. Client logo and serial numbers can be customized subject to minimum quantity.
Color	White / Yellow / Red / Green / Royal Blue  Other colors available subject to minimum quantity on forward delivery basis.





LOTO-LOK®


Model NO.	PS-375-WH (White) PS-375-YL (Yellow) PS-375-RD (Red)
Material	PP, metal lock insert
Size	Total length:375mm
Specifications	Pull tight, more than 20 locking points Total length: 375 mm; Printing area: 17*45mm Approx tensile strength: 30kgf
Printing	LOTO-LOK® brand and unique numbers on each seal. Client logo and serial numbers can be customized subject to minimum quantity.
Color	White / Yellow / Red  Other colors available subject to minimum quantity on forward delivery basis.



unit:mm

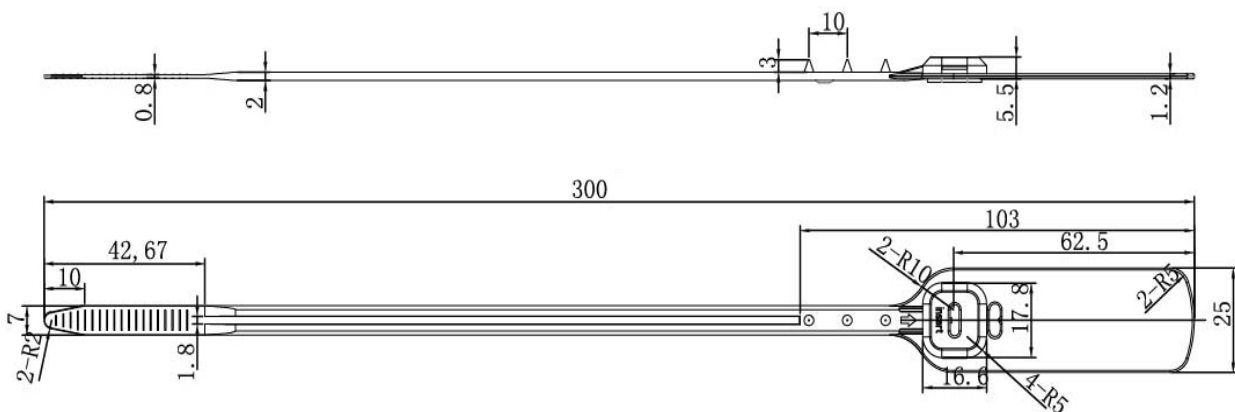


LOTO-LOK®

Model NO.	PS-ERPS-WH300 (White) PS-ERPS-YL300 (Yellow) PS-ERPS-RD300 (Red) PS-ERPS-GN300 (Green)
Material	PP (Polypropylene)
Size	Total length:300mm
Specifications	Materials: PP (Polypropylene) Pull tight locking mechanism with metal clip inside
Printing	LOTO-LOK® brand and unique numbers on each seal. Client logo and serial numbers can be customized subject to minimum quantity.
Color	White / Yellow / Red / Green  Other colors available subject to minimum quantity on forward delivery basis.




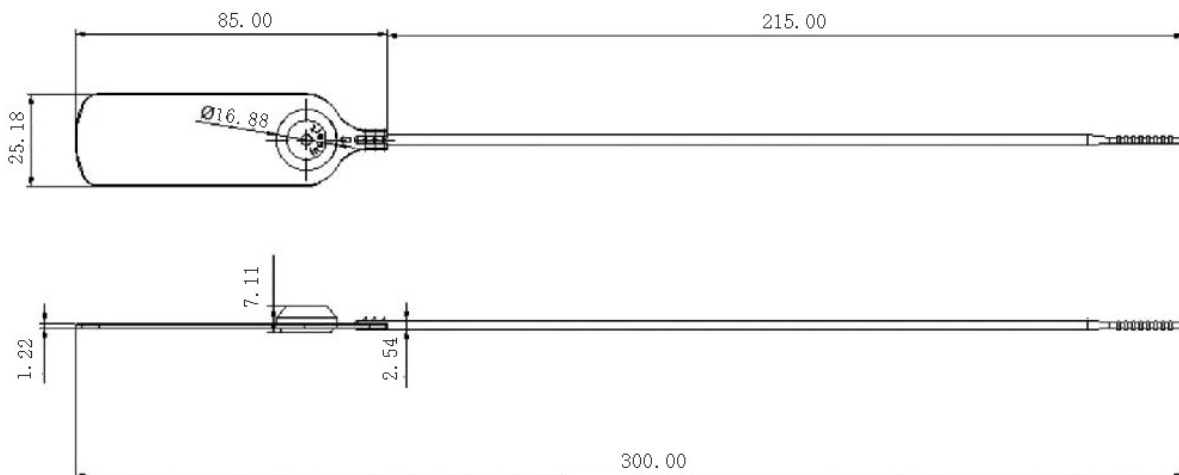
unit: mm






LOTO-LOK®

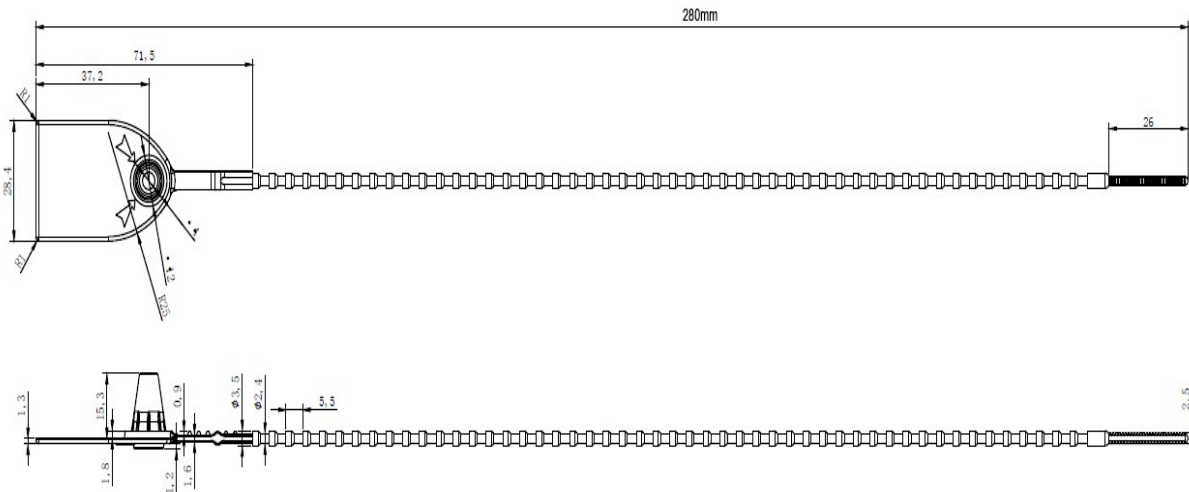
Model NO.	PS-RTPS-WH300 (White) PS-RTPS-YL300 (Yellow) PS-RTPS-RD300 (Red) PS-RTPS-GN300 (Green)
Material	PP (Polypropylene)
Size	Total length:300mm
Specifications	Pull tight locking mechanism with metal clip inside Average tensile strength: 35kgf
Printing	LOTO-LOK® brand and unique numbers on each seal. Client logo and serial numbers can be customized subject to minimum quantity.
Color	White / Yellow / Red / Green  Other colors available subject to minimum quantity on forward delivery basis.






LOTO-LOK®

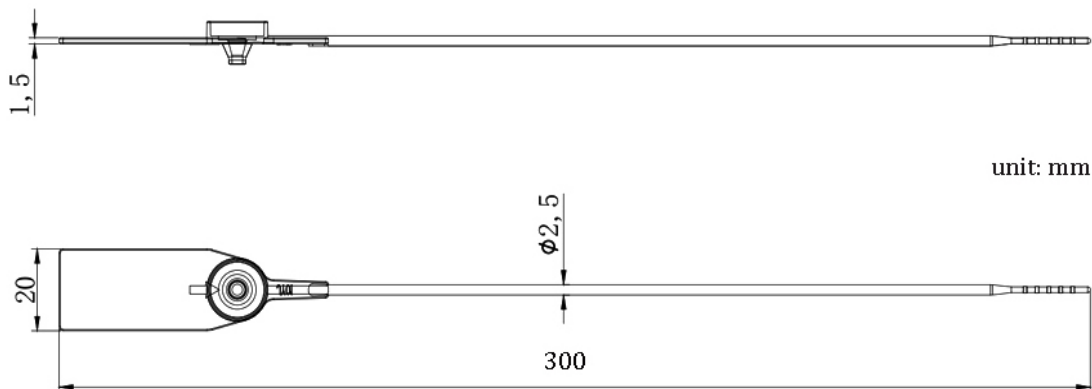
Model NO.	PS-Q300-WH (White) PS-Q300-YL (Yellow) PS-Q300-RD (Red) PS-Q300-GN (Green) PS-Q300-RB (Royal Blue)
Material	PP / PE
Size	Total length: 280mm
Specifications	Pull tight locking mechanism Total length: 280mm More than 30 locking point for custom's choice Average tensile strength: 15kgf
Printing	LOTO-LOK® brand and unique numbers on each seal. Client logo and serial numbers can be customized subject to minimum quantity.
Color	White / Yellow / Red / Green / Royal Blue  Other colors available subject to minimum quantity on forward delivery basis.






LOTO-LOK®

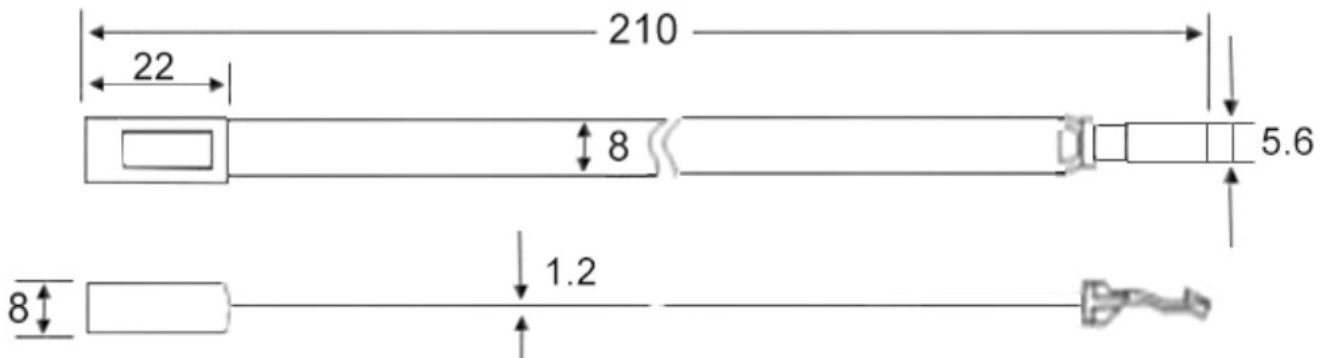
Model NO.	PS-KTPS-WH300 (White) PS-KTPS-YL300 (Yellow) PS-KTPS-RD300 (Red) PS-KTPS-GN300 (Green)
Material	PP (Polypropylene) with metal clips
Size	Total length:300mm
Specifications	Fixed length, double locking mechanism Materials: PP (Polypropylene) with metal clips Printing Area: 18*35mm; Strap Diameter: 2.50mm Average tensile strength: 25kgf
Printing	LOTO-LOK® brand and unique numbers on each seal. Client logo and serial numbers can be customized subject to minimum quantity.
Color	White / Yellow / Red / Green  Other colors available subject to minimum quantity on forward delivery basis.






LOTO-LOK[®]

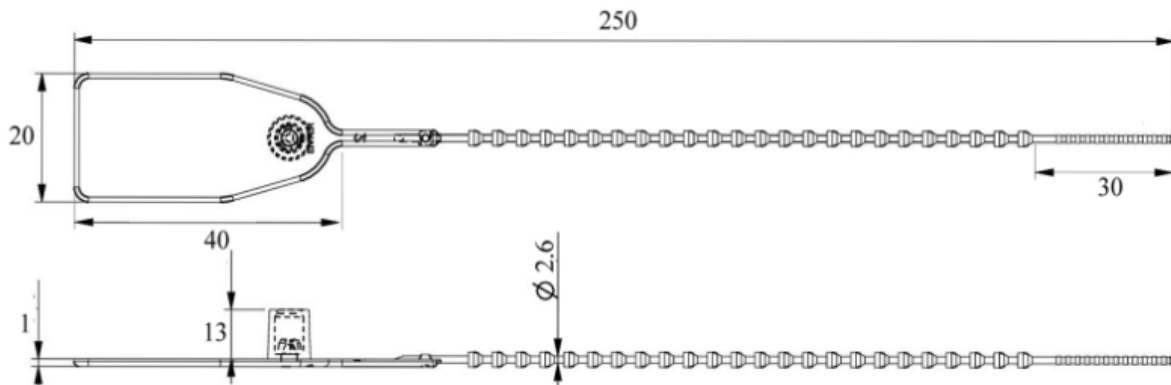
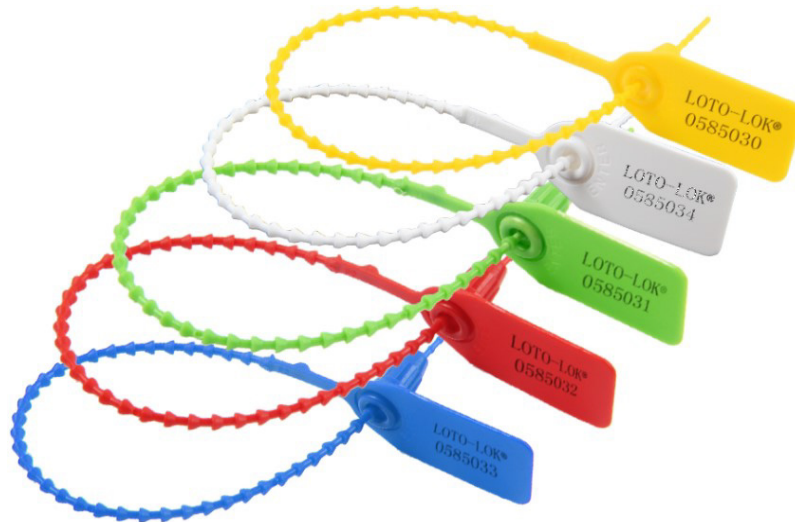
Model NO.	PS-DHP-WH210 (White) PS-DHP-YL210 (Yellow) PS-DHP-RD210 (Red)
Material	PP (Polypropylene), free of metal
Size	Total length:210mm
Specifications	Fixed length Materials: PP (Polypropylene) Dimension: 210 (L) X 8 (W) X 1.2 mm Average tensile strength: 176 N
Printing	LOTO-LOK [®] brand and unique numbers on each seal. Client logo and serial numbers can be customized subject to minimum quantity.
Color	White / Yellow / Red  Other colors available subject to minimum quantity on forward delivery basis.






LOTO-LOK®

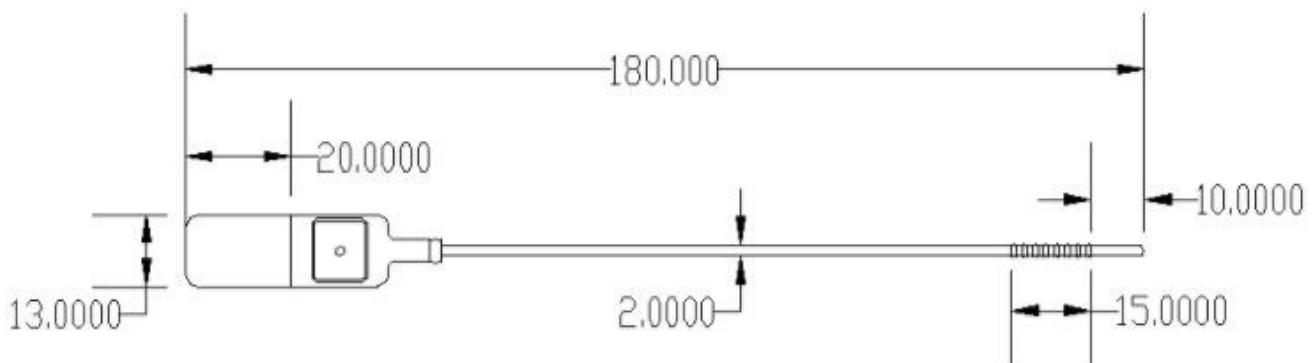
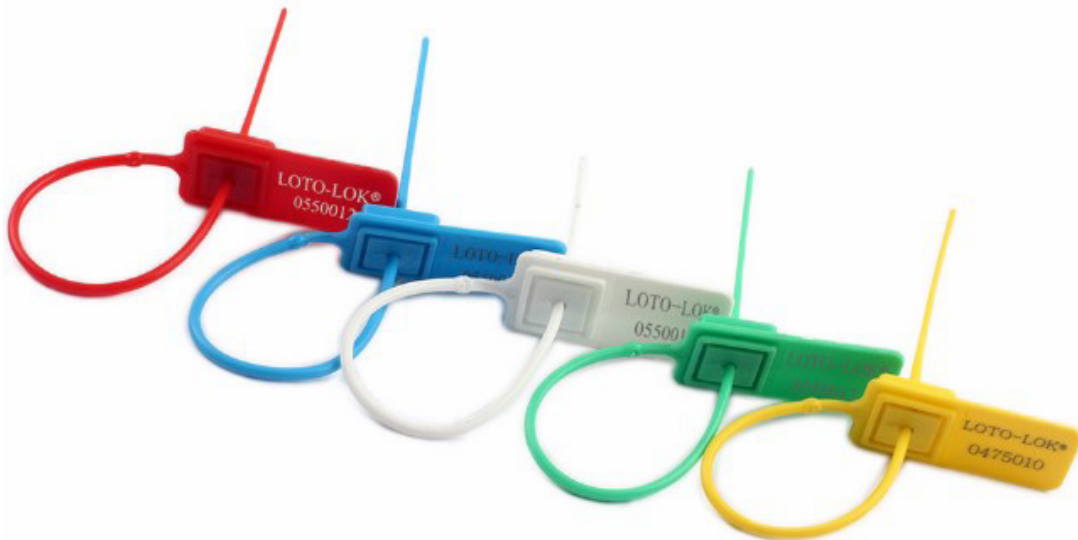
Model NO.	PS-250B-WH (White) PS-250B-YL (Yellow) PS-250B-RD (Red) PS-250B-GN (Green) PS-250B-RB (Royal Blue)
Material	PP / PE, pure-plastic
Size	Total length:250mm
Specifications	Pull tight locking mechanism Total length: 250mm Average tensile strength: 15kgf
Printing	LOTO-LOK® brand and unique numbers on each seal. Client logo and serial numbers can be customized subject to minimum quantity.
Color	White / Yellow / Red / Green / Royal Blue  Other colors available subject to minimum quantity on forward delivery basis.








LOTO-LOK®

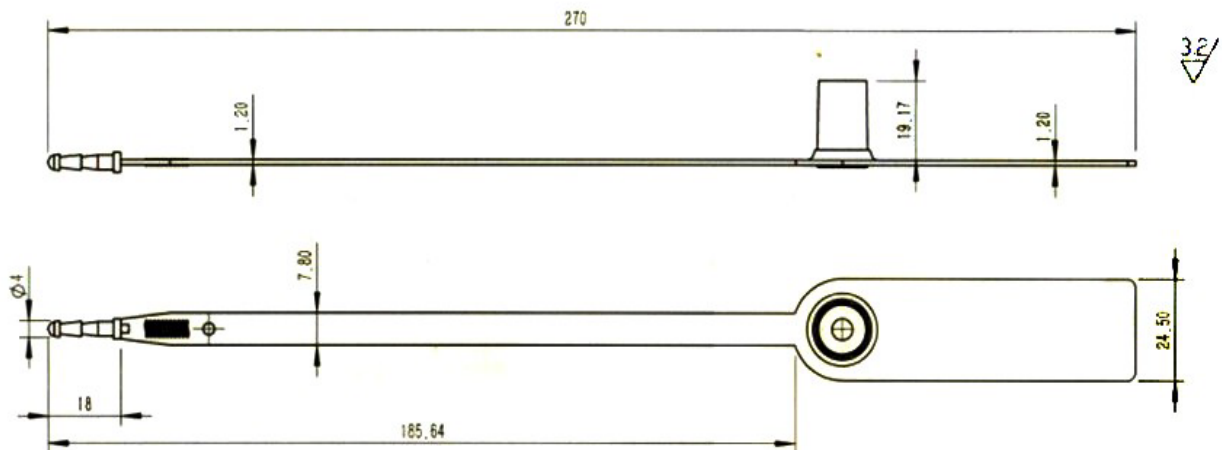
Model NO.	PS-18T-WH180 (White) PS-18T-YL180 (Yellow) PS-18T-RD180 (Red) PS-18T-GN180 (Green) PS-18T-RB180 (Royal Blue)
Material	PP (Polypropylene)
Size	Total length:180mm
Specifications	Pull tight locking mechanism with metal clip inside Average tensile strength: 15kgf
Printing	Client logo and serial numbers can be customized subject to minimum quantity.
Color	White / Yellow / Red / Green / Royal Blue  Other colors available subject to minimum quantity on forward delivery basis.






LOTO-LOK®

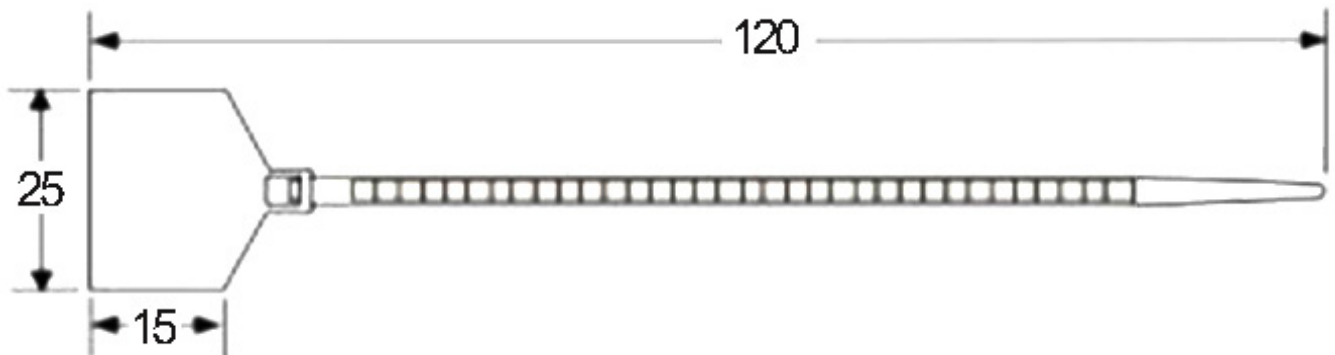
Model NO.	PS-Y270-WH (White) PS-Y270-YL (Yellow) PS-Y270-RD (Red)
Material	PP; All plastic, free of metal
Size	Total length:270mm
Specifications	Fixed length pure PP (Polypropylene) product Average tensile strength: 176 N Weight: 5g/pcs
Printing	LOTO-LOK® brand and unique numbers on each seal. Client logo and serial numbers can be customized subject to minimum quantity.
Color	White / Yellow / Red    Other colors available subject to minimum quantity on forward delivery basis.






LOTO-LOK®

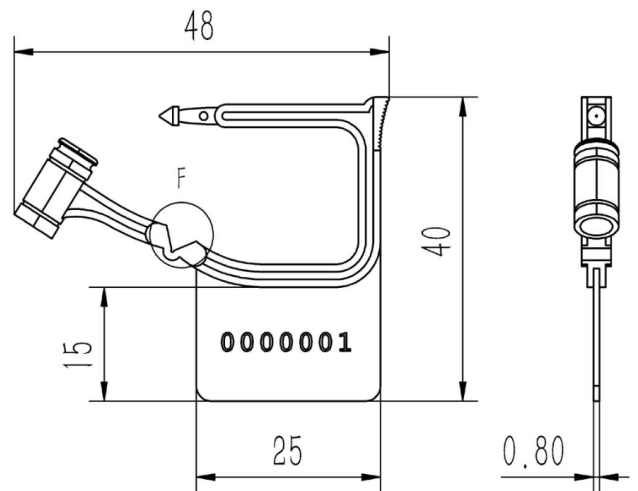
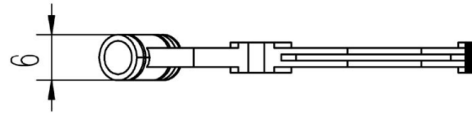
Model NO.	PS-120WH (White) PS-120YL (Yellow) PS-120RD (Red) PS-120GN (Green)
Material	Nylon
Size	Total length:120mm
Specifications	Pull type sealing strip Falg Dimension: 25*15mm Weight: 0.9G/PCS
Printing	LOTO-LOK® brand and unique numbers on each seal. Client logo and serial numbers can be customized subject to minimum quantity.
Color	White / Yellow / Red / Green  Other colors available subject to minimum quantity on forward delivery basis.





LOTO-LOK®

Model NO.	PS-PL05-WH (White) PS-PL05-YL (Yellow) PS-PL05-RD (Red) PS-PL05-GN (Green) PS-PL05-RB (Royal Blue)
Material	Polypropylene. Pure-plastic product, recyclable
Size	Width: 48mm, Length: 40mm
Specifications	Self-locking fixed type, easy use Tensile strength: about 5kgf
Printing	LOTO-LOK® brand and unique numbers on each seal. Client logo and serial numbers can be customized subject to minimum quantity.
Color	White / Yellow / Red / Green / Royal Blue  Other colors available subject to minimum quantity on forward delivery basis.



LOCKOUT / TAGOUT & ARC FLASH PPE SAVES LIVES

Is your facility compliant to OSHA 29 CFR 1910.147 standard?

LOCKOUT / TAGOUT

 **Electrical Lockouts**

 **Mechanical Lockouts**

 **Safety Padlocks**

 **Danger Tags**

 **Group Lockout**

 **Identification**

 **Assessment**

 **Demonstration**

 **Supply**

 **Installation Support**

LOTO DEVICES, PADLOCKS AND TAGS FOR ISOLATION OF HAZARDOUS ENERGY



Safety Lockout Padlocks



Lockout Hasps



Circuit Breaker Lockouts



KAB-O-LOK Cable Lockouts



Mechanical Lockouts



Plug Lockouts



Panel Lockouts



Group Lock Box



Key Safe Box



Loto Stations



Key & Padlock Cabinets



Lockout Tags

ELECTRICAL SAFETY SOLUTIONS ARC FLASH PROTECTION PPE



Wall Mounted Rescue Kit



Arc Rated Balaclava



Arc Rated Helmet & Visor



CEI IEC 61243-1 Contact Voltage Detectors



Earthing & Short circuiting kits



Voltage Detectors



LOTO SAFETY REQUISITES TRADING L.L.C.

Safety Solutions - Synergized

Tel: +971-4-4539779 Fax: +971-4-4539778 DUBAI - UAE

E-mail: info@lotosafetyproducts.com

CALL US TODAY: +971-50-5843270

www.lotosafetyproducts.com